



DANTECH®

ID 89
TITAN
MAX

MEAT and BACON PRESS



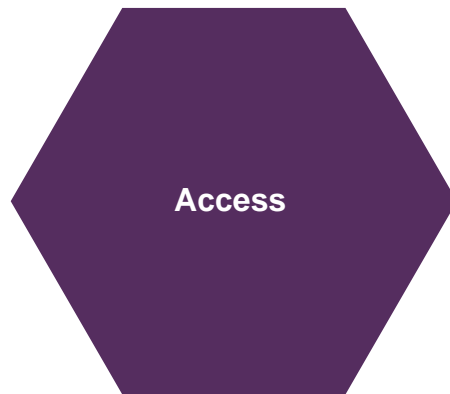
www.dantechuk.com



DANTECH®

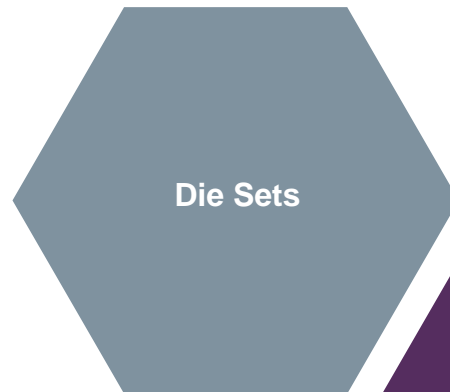
Access

Great access to the high pressure wash down area. Easy maintenance access with lift up hoods on gas struts.



Die Sets

Blue HMW PE 500* die sets machined from a single block available to your shape and size.



Safety the Priority

Safety the Priority

Fully interlocked doors and secured covers ensure access is safe & easy.

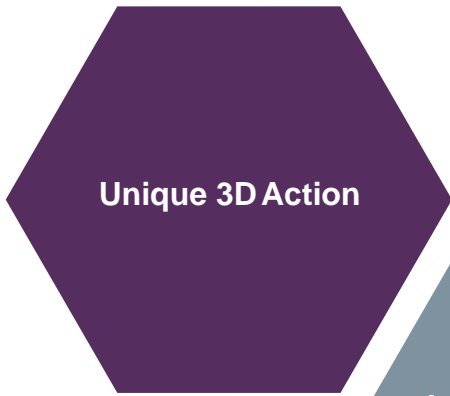


Fast Die Set Change

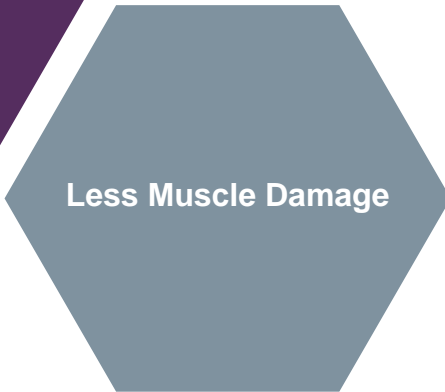
Fast and simple quick release system means a complete 6 minute die set change-over.



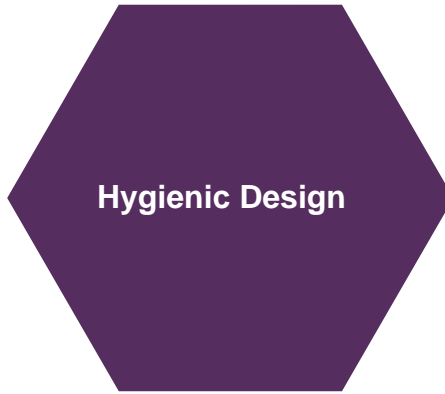
ID 89 TITAN MAX



Unique 3D Action



Less Muscle Damage



Hygienic Design

Unique 3D Action

Advanced design engineering technology optimizing “Mechanical Advantage” converting linear to high ratio radial movement resulting in up to 50 tonnes of pressing power.

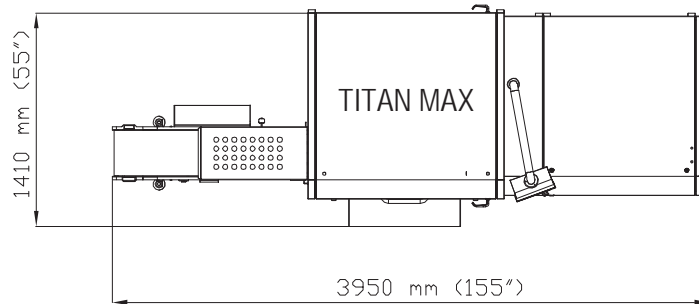
Less Muscle Damage

“Press to a Pressure Sensing” technology controls the effect of rippling and muscle rupture.

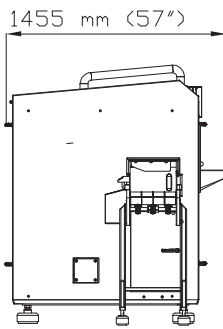
Hygienic Design

Designed to comply with CE, USDA and the AMI 10 Principles of “Hygiene and Sanitization”.

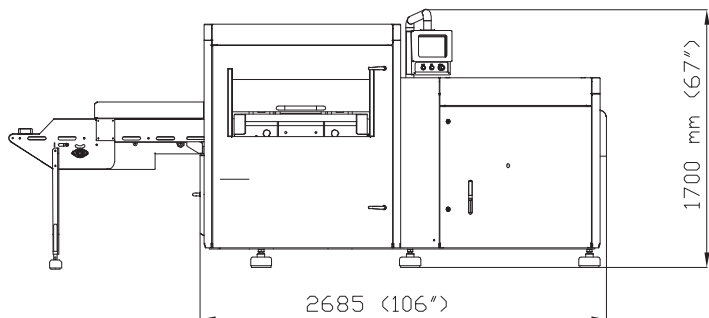
Ergonomic Design
Perfect and comfortable loading height for the machine operator, improves health & safety for operators.



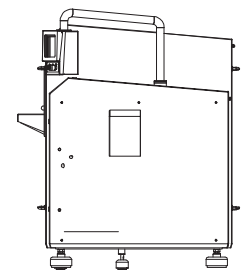
Plan View



End View



Front View



End View

OPTIONAL EQUIPMENT

The Dantech Meat/Bacon Press offers optional equipment to aid in the meat forming process. All materials are CE and FDA approved for direct contact with food products

Auto Loaders

The auto-loaders are designed to improve efficiency and convenience.

This can allow for one operator to be positioned close to the source of the products and be capable of loading a left and right-hand press simultaneously.

Storage/Cleaning Rack

The cleaning rack is designed to safely hold in place two or four sets of dies which can be foam cleaned and pressure washed. The stainless steel rack is designed for easy transportation and storage within the production area.

Additional Die Sets

Changing die sets takes three minutes to remove and three minutes to refit with minimal tools. Blue HMW PE 500 die sets are machined from a single block and custom designed to fit your forming needs.

DANTECH PRESS:

The DanTech Press is the latest development in high output forming. The revolutionary MPr89 Press by Dantech with its patented pressing methodology offers consistent production while lowering your operating costs and increasing yield. At DanTech we value our customers and are dedicated to maintaining lasting relationships to ensure continued customer satisfaction.

FEATURES AND BENEFITS

The Titan Max Press is designed to comply with CE, USDA and the AMI 10 Principles of “Hygiene and Sanitation”.

SAFETY THE PRIORITY

Secured with fully interlocked doors and safety covers. Our press is designed with your yield and production needs in mind.

ACCESS

All covers and doors are designed for easy access to hygiene and maintenance.

TOUCH SCREEN

The latest Series 800 Allen-Bradley 7” HMI PanelView and PLC controls give the operator full access to a series of pre-set menus.



UNIQUE 3D ACTION

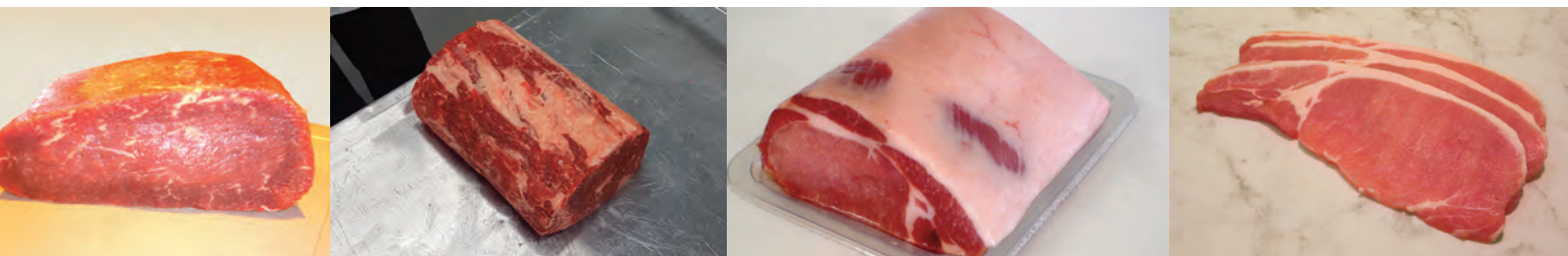
The patented forming technology with 100% hydraulic system.

LESS MUSCLE DAMAGE

Our Fulcrum technology controls the effect of rippling and muscle rupture.

DIE SETS

Blue HPW PE 500 die sets are machined from a single block and are custom designed to fit your forming needs.



TECHNICAL SPECIFICATIONS

MODEL	ID 89 TITAN MAX
PERFORMANCE	Up to 12 Cycles/minute (Product dependent)
PRODUCT TEMPERATURE RANGE	0 to -12°C
MAXIMUM Die sizes L x W x H	890 x 275 x 120 mm (35 x 11 x 4 3/4 in)
MAXIMUM Product Size L x W x H	850 x 350 x 150mm (33 x 14 x 6 in)
MAXIMUM Chamber Size	20,000mm ² (32 sq in) (CSA)
POWER kW (HP)	15/18 kW (20/24 HP) 24VDC
VOLTAGE/FREQUENCY	400 - 480 50/60 Hz 32A supply
COOLING WATER & COMPRESSED AIR	NOT REQUIRED
OIL TYPE	200L (53 US gallons) Type: ISO 32
MACHINE DIMENSIONS L x W x H	3950 x 1410 x 1750 mm
SHIPPING DIMENSIONS L x W x H	3000 x 1550 x 2100 mm
MACHINE WEIGHT	2250 kg (4960 lbs)
SHIPPING WEIGHT	2600 kg (5750 lbs)

Standard Equipment:

- Unloading Conveyor Length 1290 mm (51")
- Allen-Bradley Series 800 7" PanelView HMI and PLC

Options:

- Auto-Loaders
- Integration to fully automatic slicer lines
- Cleaning trolleys 2 or 4 die sets

Designed and built in Great Britain in accordance with CE & USDA requirements
Copyright and IP retained by DanTech



MARCH 21/V1

DanTech UK Ltd

Merlin Park, Ringtail Road,
Burscough, Lancashire
L40 8JY Great Britain

Terms & Conditions of Sale
Products are supplied subject to DanTech
Terms & Conditions of Sale.
These are available on request or may be
viewed and downloaded from our website:
www.dantechuk.com

T: +44 (0) 1704 894 785
sales@dantechuk.com
www.dantechuk.com